



Sausal Creek

# Walkable Watershed

healthy waters : healthy communities

*San Francisco Bay Pilot: Sausal Creek*

Community Leader Charrette

May 11, 2016

Marcus Griswold



# Overview

- Project Overview
- Watershed Context
  - Assets and Challenges
  - Opportunities
    - Green Streets
    - Creek Access
    - Art and Trail Connections
- Community Discussion





# Sausal Creek Team

- **Friends of Sausal Creek**
- **National Park Service**
- **City of Oakland**
- **California State University**
- **Unity Council**
- **Skeo**
- **All of you!**



# Purpose

Develop a shared vision, set of strategies and concept plan to improve watershed and neighborhood health.

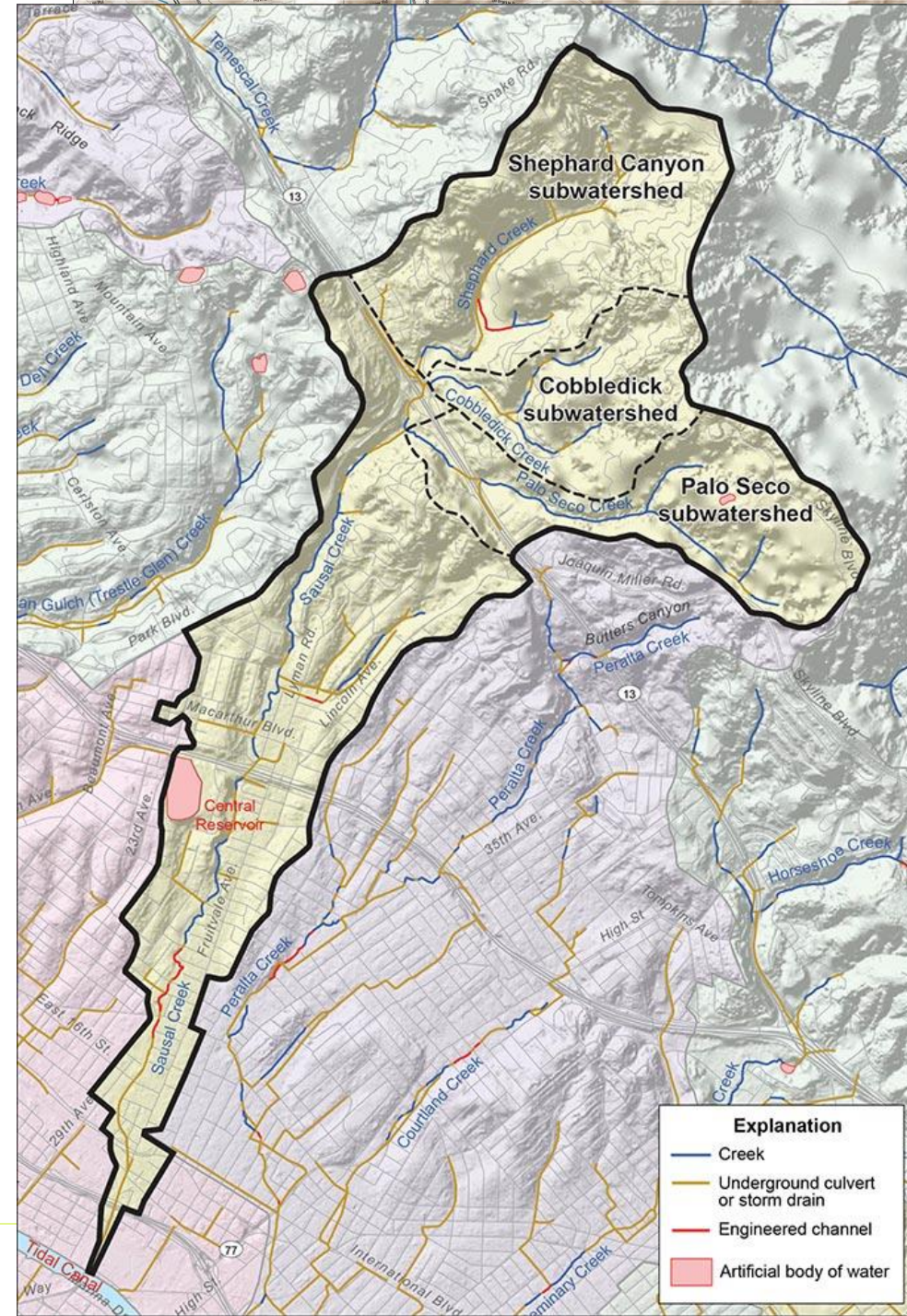






# Sausal Creek Watershed

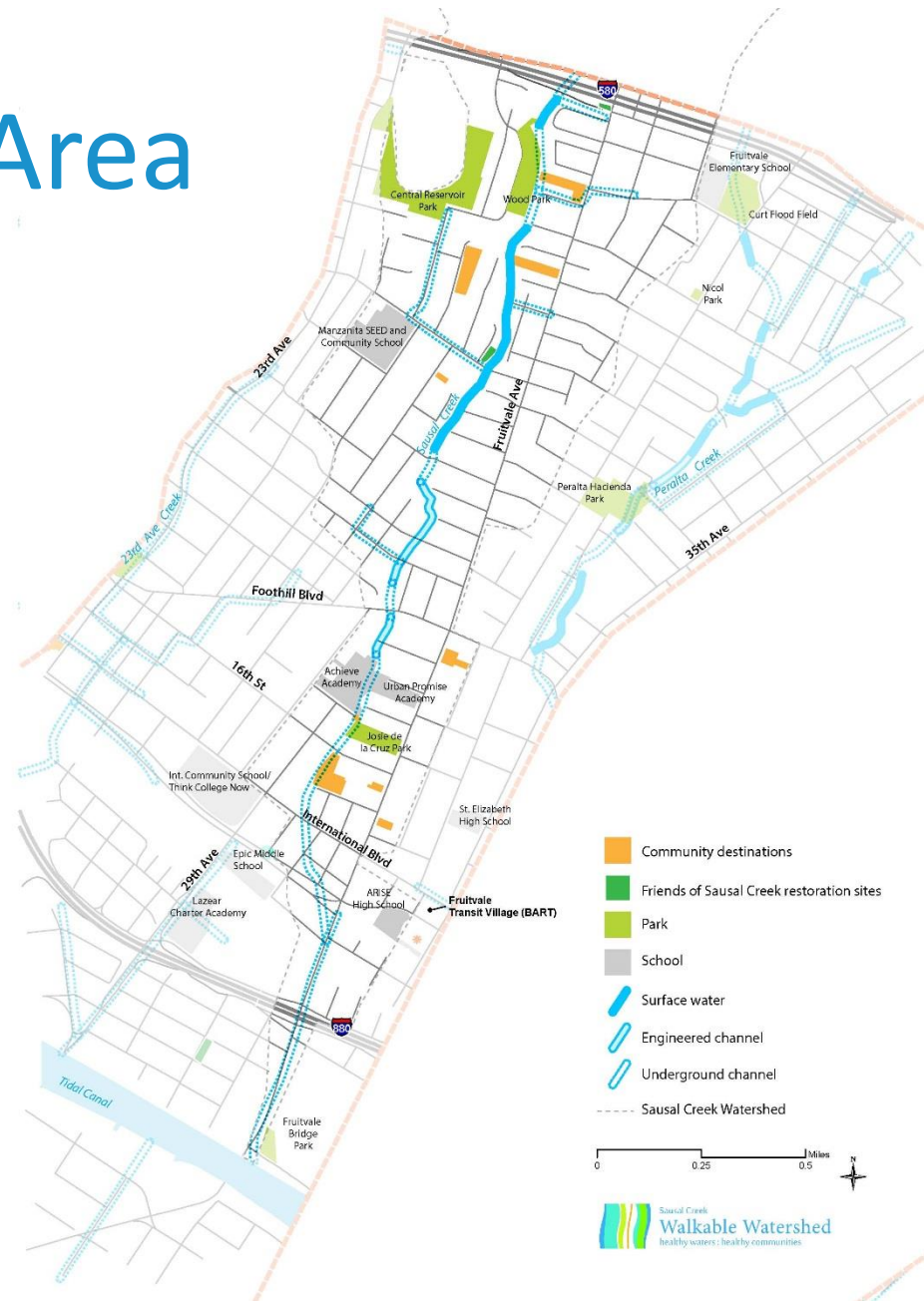
- All land draining to Sausal Creek
- Substantial watershed improvements above 580
- Walkable Watershed focused on area below 580





# Project Study Area

- Includes:
  - Dimond, Wood and Josie de la Cruz Parks
  - Fruitvale and Dimond neighborhoods
- Stormwater flows to the creek, and out to the estuary at Fruitvale Bridge Park.
- Much of the creek is piped below ground.







# What is a Walkable Watershed?

An approach to watershed planning that *links environmental and social equity goals*.

Celebrates the creek as a *catalyst for community revitalization* by integrating investments in watershed and neighborhood stewardship.



*Fruitvale Village TOD*



# Walkable Watershed Process

1. Bring stakeholders together.
2. Develop a shared understanding of both the technical and the community based issues.
3. Identify strategies that improve conditions for both pedestrians and water quality.
4. Unify strategies into a cohesive vision to leverage funding and partnerships for implementation.







# Project Goals

- ***Improve connectivity*** across the watershed and engage a ***broad cross section of the community***
- ***Utilize art*** to highlight the importance and history of the underground stream system
- ***Engage local schools*** and provide accessible educational, bilingual information to community members on the benefits of the watershed
- ***Leverage City of Oakland plans and requirements:*** Urban Greening requirements and Fruitvale Improvement Plan, and others!



# Project Schedule

- January-March: Information Gathering
- April: Challenges and Opportunities
- **May-July: Stakeholder Forums**
- July-September: Final Plan



*Sausal Creek at the Estuary*

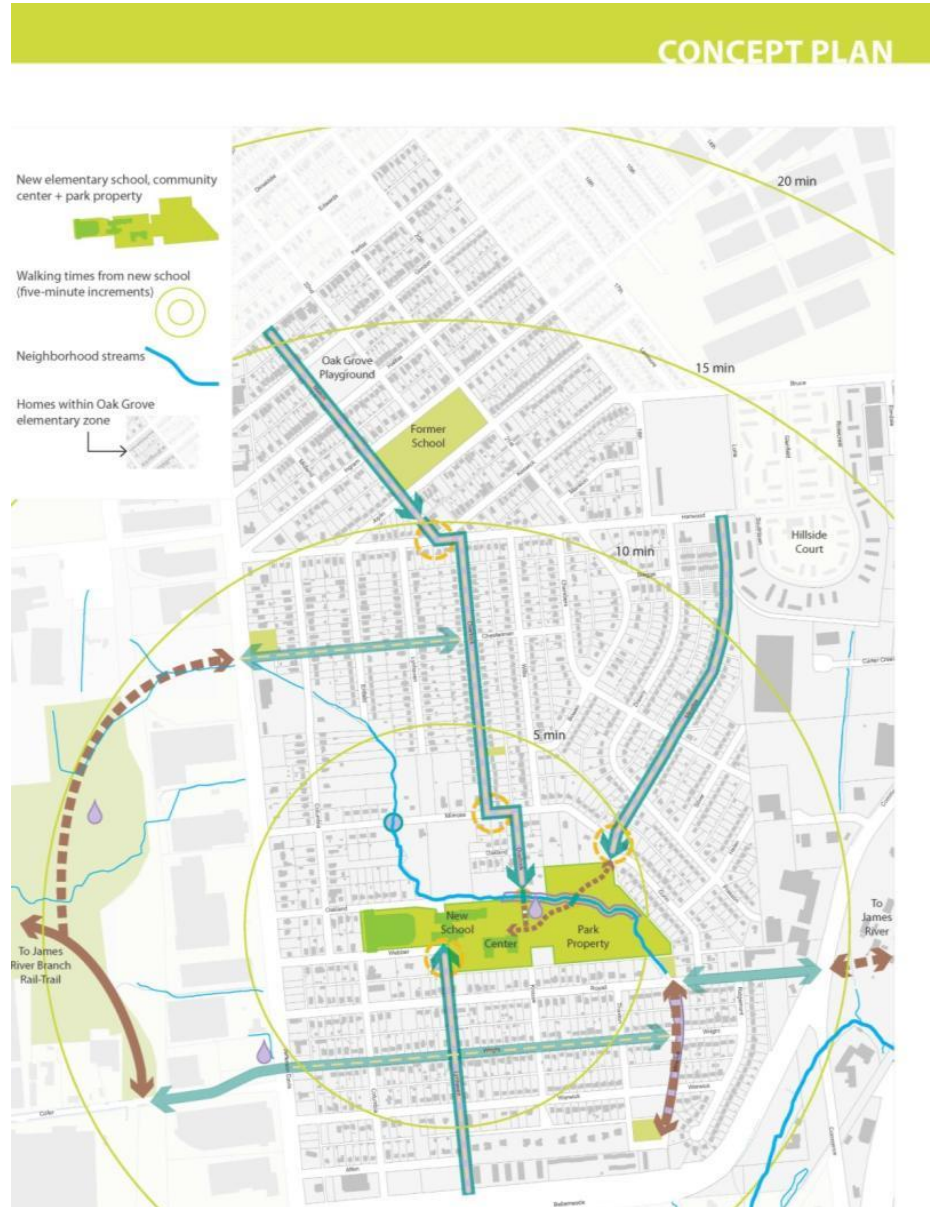


*22<sup>nd</sup> St (Austin Square)*



# Outcome

- Combine strategies into a larger concept plan that represents a shared vision among diverse stakeholders.
- Provides a roadmap to guide investments and engage a range of partners and funding sources.



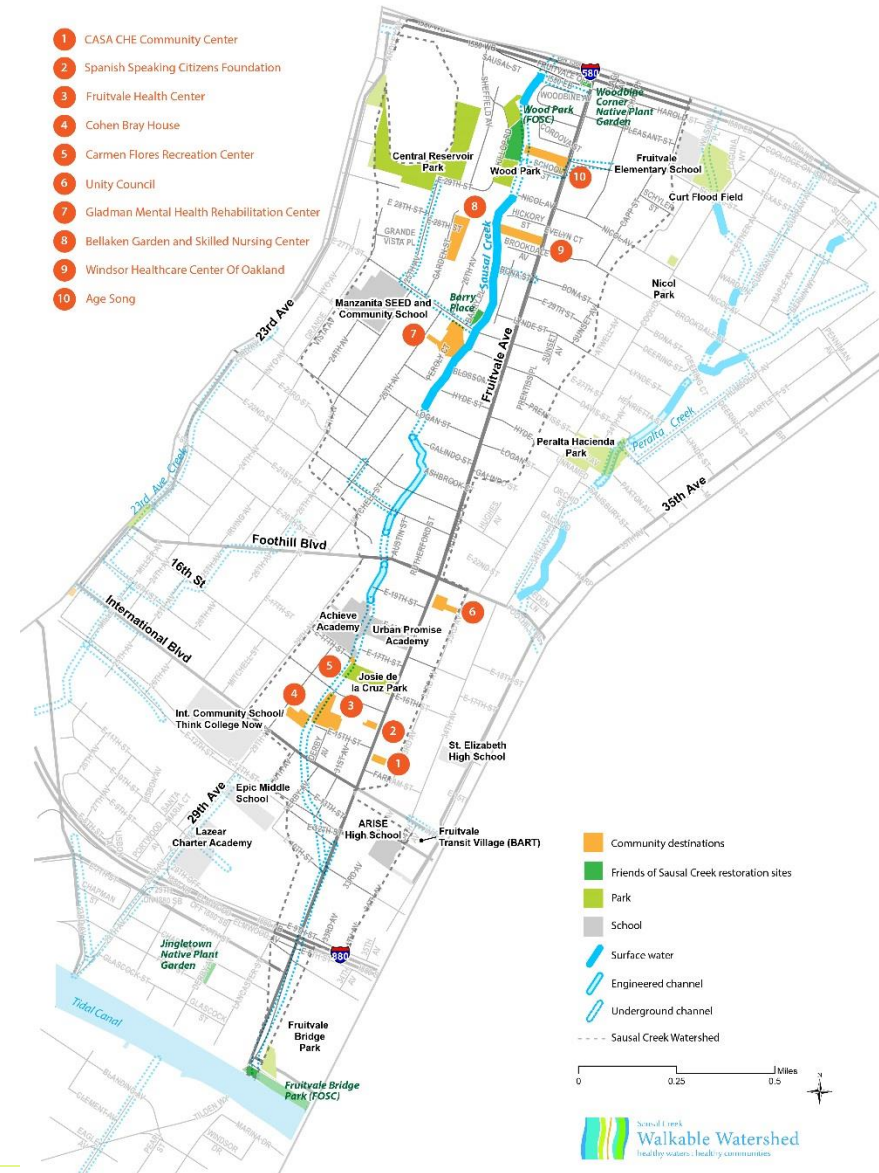


# Assets and Challenges



# Community Assets

- **Parks:** Josie de la Cruz, Wood and Fruitvale Bridge Park
- **Schools:** Redwood Day School, Manzanita SEED and Community School, Achieve, Urban Promise, ARISE, Epic, ERES Academy
- Community Organizations
- Businesses
- Health and Community Centers
- Fruitvale Village





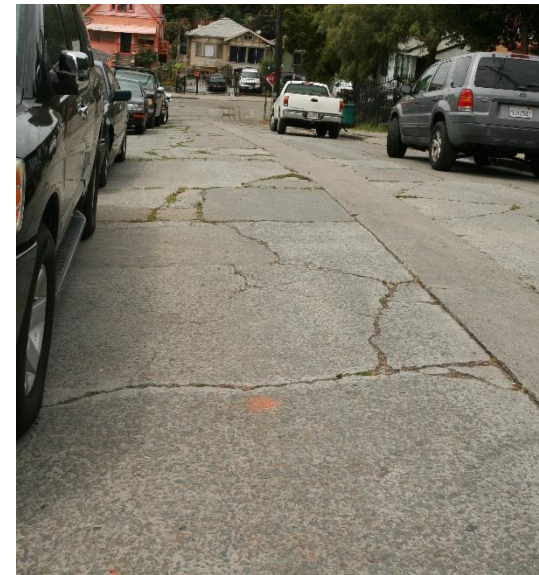
# Challenges

## Mobility and Safety

- Perception that walking in neighborhood and parks is not safe
- Integrated bike lanes not seen as safe
- Potholes and damaged roads along major intersections



*580 Underpass*



*25<sup>th</sup> Street*





# Challenges

## Watershed Awareness and Access

- Unaware of creek
- Creek inaccessible and fenced off
- Illegal dumping and crime at creek crossings and at intersections
- Storm drain clogs near creek
- Parking lots and streets drain directly to stream



*Potential creek access at Peroly Ct*



*Potential Creek access at 22<sup>nd</sup> Street*



*Potential Creek access at Josie de la Cruz Park*



# Opportunities

- Green Streets
- Creek Access
- Art and Trail Connections
- Schools and Civic Spaces



# Green Streets: Community Connections

- Transportation Plans
  - Pedestrian Plan
  - Bike Plan
  - Corridor Nodes
  - Public transit connections
- Safe Routes to Schools
- Urban Greening/Green Streets

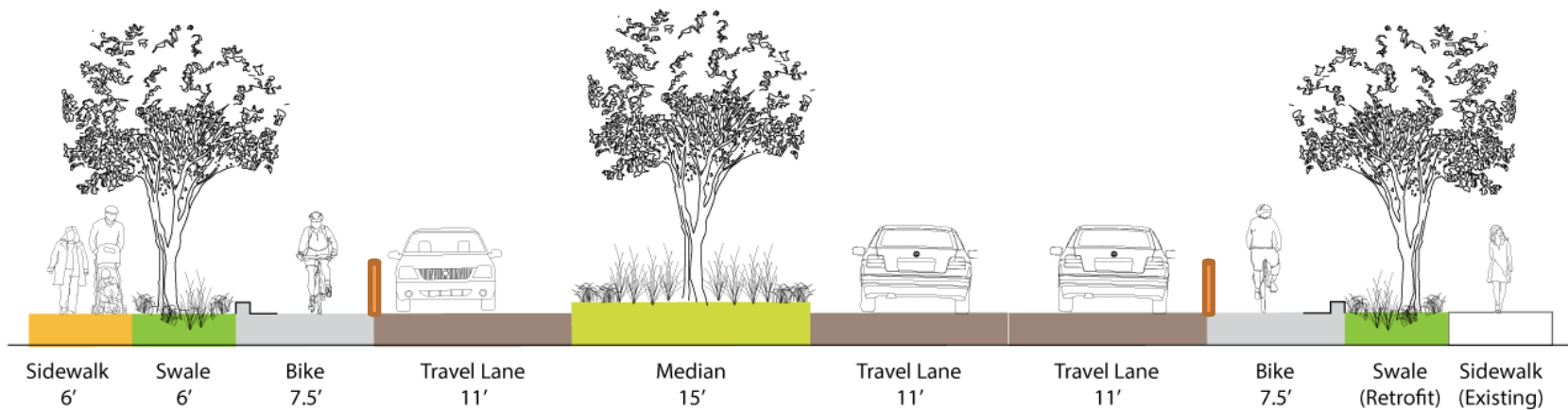






# Green Streets: Full street coverage

**Fruitvale Ave and Foothill Blvd:**  
Part of Oakland's Urban Greening program. Potential opportunities for *protected bike lanes, swales and safe crossings.*



*Potential green streets design for 90 foot right of way (Fruitvale is 80')*



# Green Streets: Swales

**23<sup>rd</sup> Street: Swales** are planted channels that trap excess water from streets. They can reduce flooding and clean water before it goes to creeks.



*23<sup>rd</sup> Street near Sausal creek*



*Curb extension retrofit*





# Green Streets: Safe Crossings

Stormwater capture along streets can create **safe** access for all people **and** enhance **water quality** by cleaning stormwater runoff.



*Fruitvale Avenue*



*Safe crossing and stormwater capture*





# Green Streets: Cul-de-sacs

**Peroly Court: Cul-de-sacs** provide an opportunity to catch and clean water before reaching the creek while beautifying unused areas.



*Peroly Court cul-de-sac abuts large parking lot for health center*

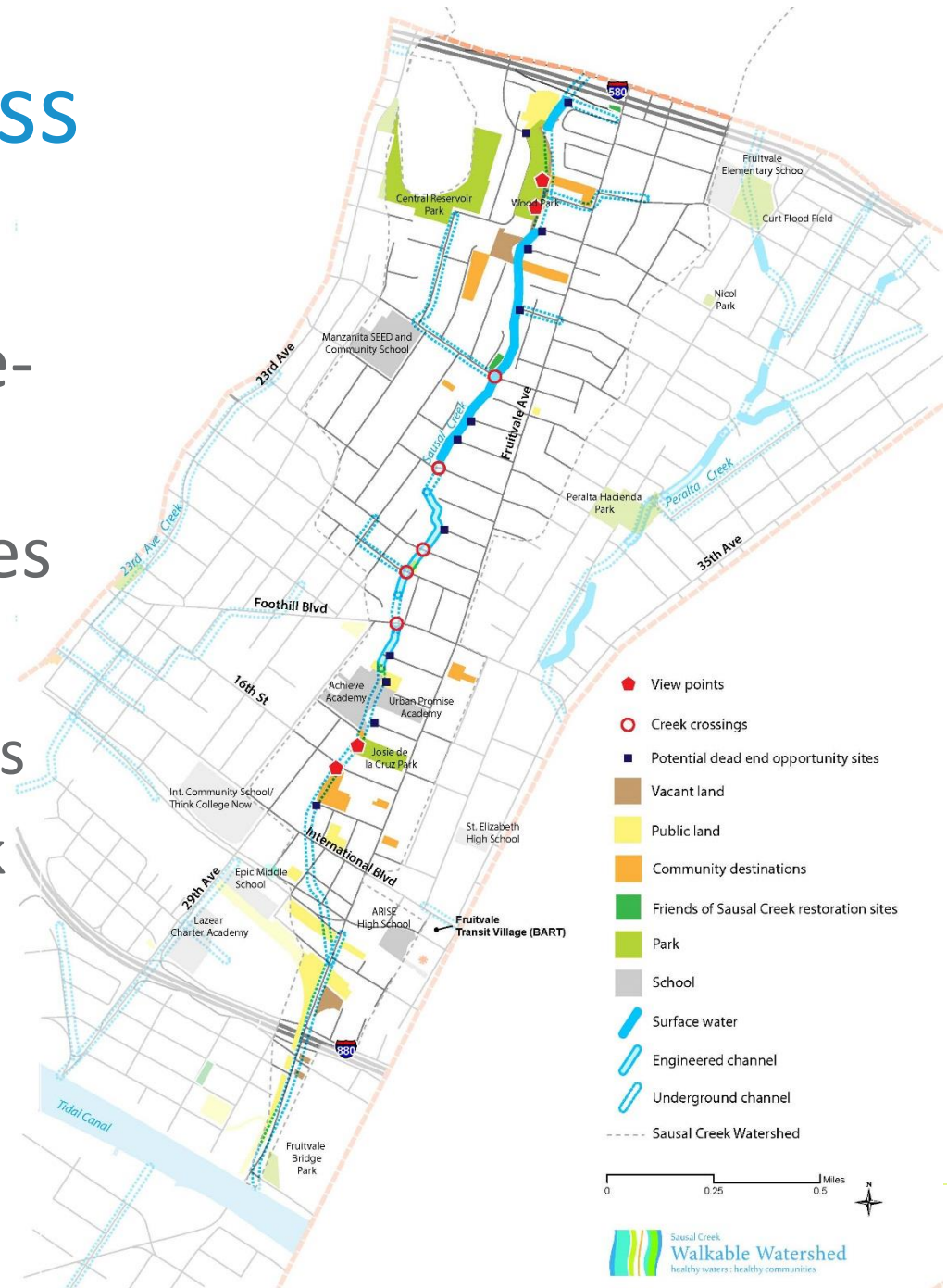


*Cul-de-sac with vegetated bioswale*



# Creek Access

- Viewpoints at cul-de-sacs and crossings provide opportunities for
  - Parklets and benches
  - Signage and artwork
  - Neighborhood stewardship





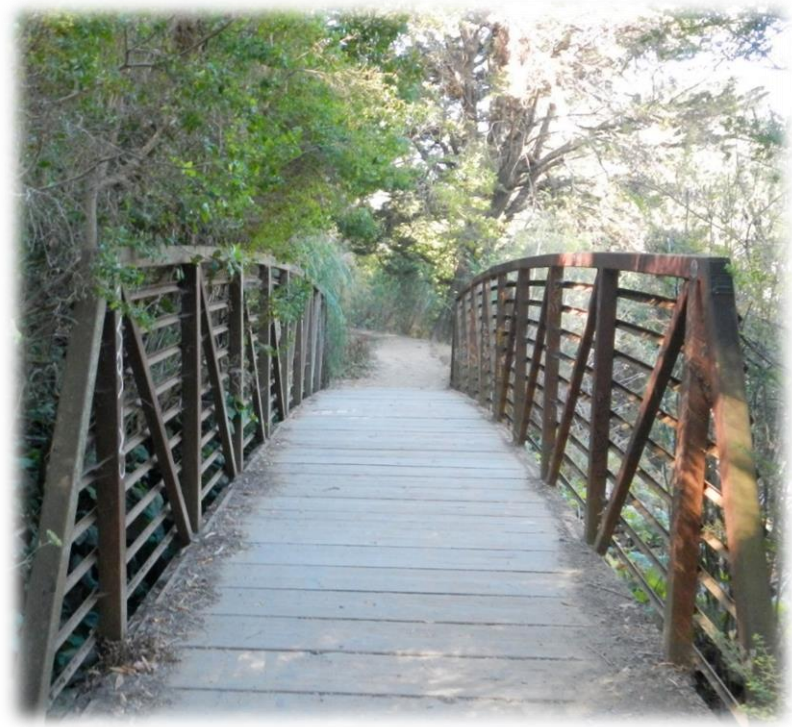


# Creek Access: Crossings

**Hyde and 25th Street:** New creek crossings can connect separated neighborhoods and increase access to community assets.



Potential Sausal Creek Crossing at 25<sup>th</sup> Street



Sausal Creek Crossing at Bridgeview



# Creek Access: Viewpoints

**Cul-de-sacs and Crossings:** Improving creek views and overlooks connects to our senses and can improve health and wellness.



Creek View at Josie de la Cruz Park



Creek Viewpoint College Township, PA





# Creek Access: Viewpoints

**Peroly Court:** Public land near Manzanita School could provide green space between Wood and Josie de la Cruz Parks. Nature-based play spaces could connect families to their environment.



*Peroly Court Creek Access*



*Natural play spaces and overlooks*



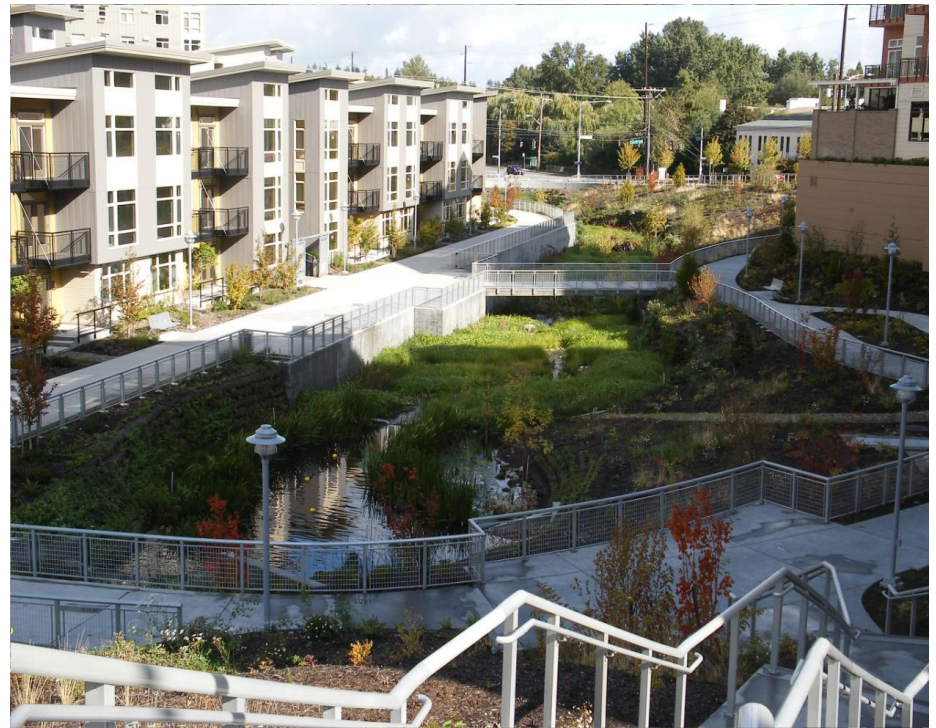


# Creek Access: Daylighting Buried Streams

**William Wood Park:** Bringing buried streams to life again restores wildlife and water quality and increases awareness.



*Buried Stream in William Wood Park*



*Daylighted Thornton Creek in Seattle*

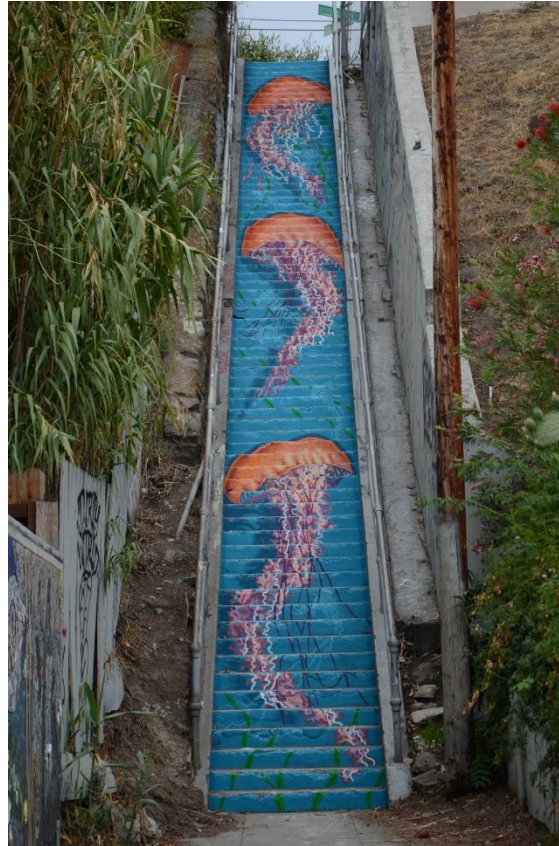




# Art and Trail Connections: Celebrating the Watershed



*Bridge reflects skeleton of native fish*



*Carrington Steps near Peralta Creek*

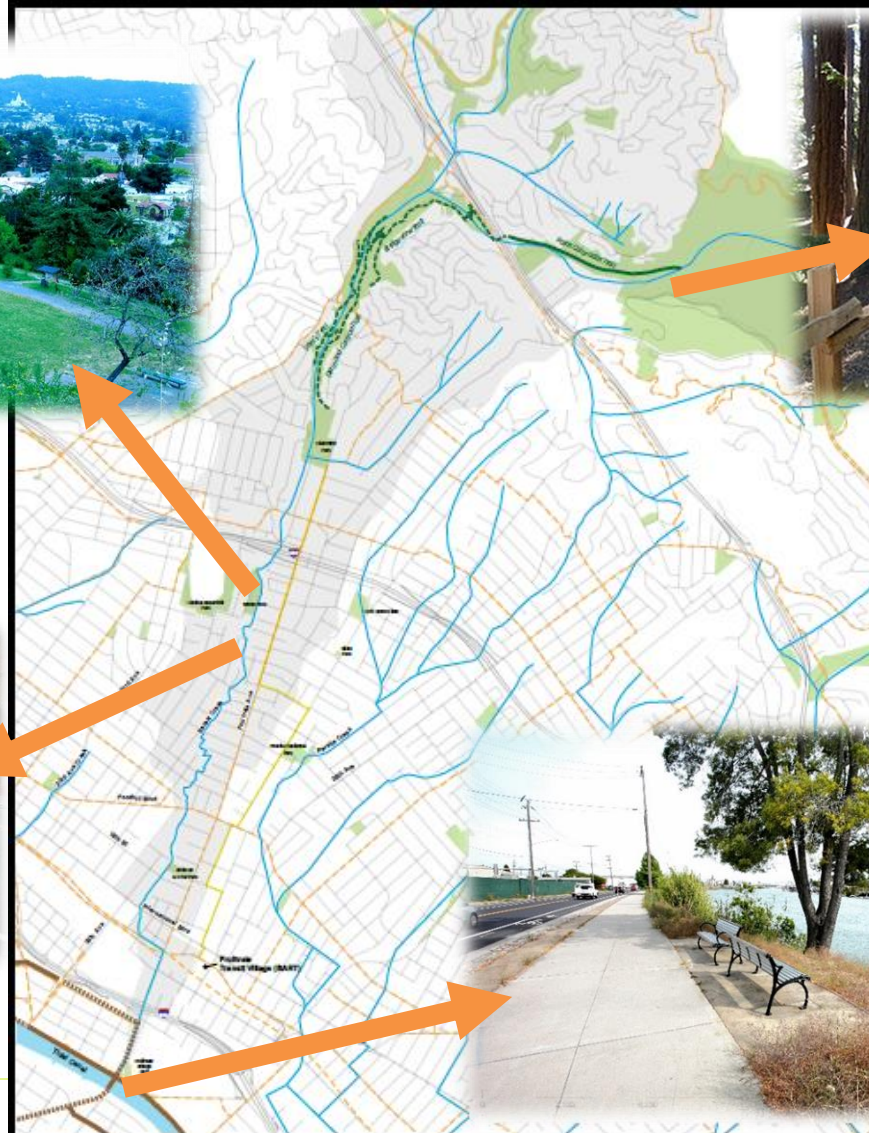


*Painted Sausal Creek at Urban Promise*





# Art and Trail Connections







# Art and Trail Connections: Underpasses



*580 Overpass connection from  
Dimond Park to Wood Park*



*Undergardiner community space in Toronto*



*Underpass at Fruitvale and 880*



*The Underline beneath Miami's Metro*



# Art and Trail Connections: Signage and Plantings

**Fruitvale Ave Rail Right of Way:** Plantings, art and signage can improve walking experiences and water quality by trapping chemicals in runoff.



*Rail Right of Way on Fruitvale, adjacent to  
Fruitvale Station*



*Along pedestrian routes  
with educational signage*





# Art and Trail Connections: On-street



Protected underpass trail (Atlanta)



On street trail



Green/Edible wall

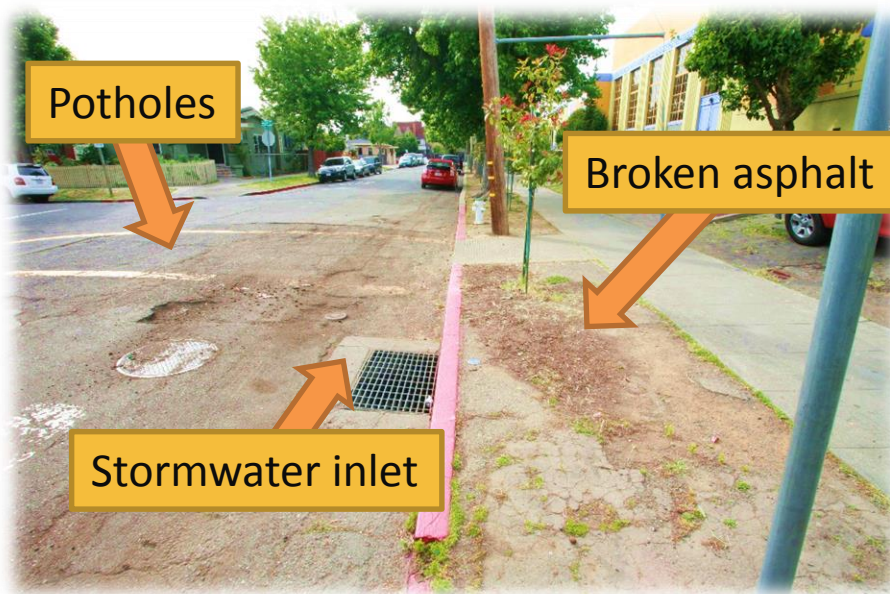


Cultural signage



# Schools and Civic Spaces: Drop-off zones

**Achieve Academy:** Outdated infrastructure near schools provides an opportunity for safe routes, improved water quality and environmental education.



*29<sup>th</sup> Ave and E. 17<sup>th</sup> Street: Achieve Academy*

## STORMWATER PLANTER



*Stormwater planter cleans water from roads before reaching creeks*





# Schools and Civic Spaces: Buildings

**Josie de la Cruz Park (Carmen Flores Recreation Center):** Capture rain from roof to irrigate future tree grove. Rain barrels and cisterns can store months of irrigation water from roofs.





# Schools and Civic Spaces: Parking Lots



*Parking lots drain stormwater  
directly into the creek*



*Bioretention and rain gardens can clean  
stormwater with a minimal footprint*





## Next Steps

- Gather input today
- Gather input during youth session
- Share ideas with City and County
- Draft Sausal Creek draft walkable watershed plan
- Present draft to broader public





# Questions?



# Contact Information



**Marcus Griswold**

Walkable Watershed

San Francisco Bay Coordinator

Skeo Solutions

[mgriswold@skeo.com](mailto:mgriswold@skeo.com)

[www.walkablewatershed.com](http://www.walkablewatershed.com)