



Walkable Watershed

healthy waters : healthy communities

Information Meeting
Petersburg, VA
Thursday, January 12, 2016





Partners and Funding

- Partners



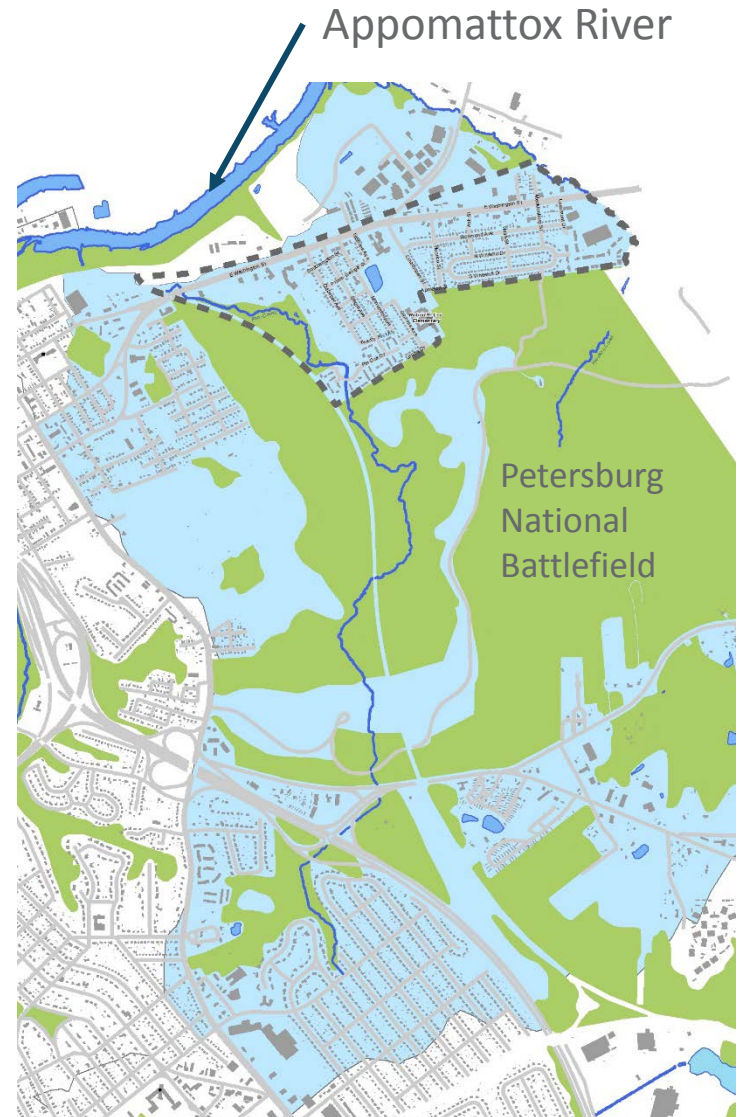
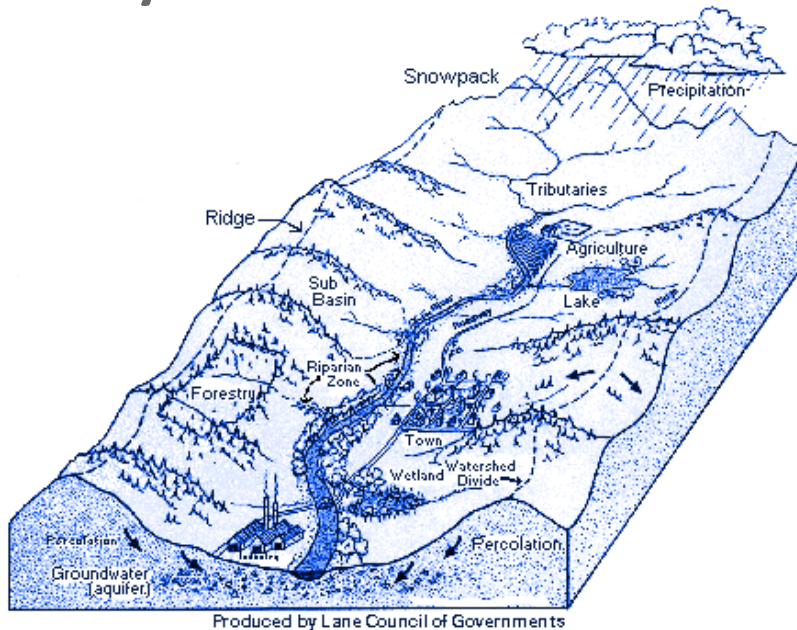
- Funding





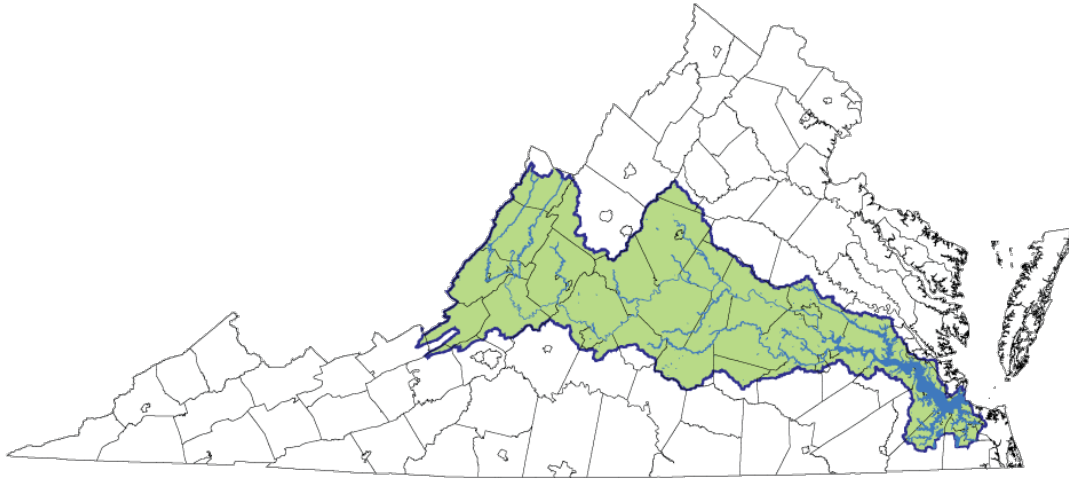
A watershed is...

An area of land that drains into the same body of water.





...part of larger Watersheds



James River Watershed
10,000 square miles

Chesapeake Watershed
64,000 square miles





How does a rain drop travel through the community?

Rain water flows across the surface or in ditches and into inlets



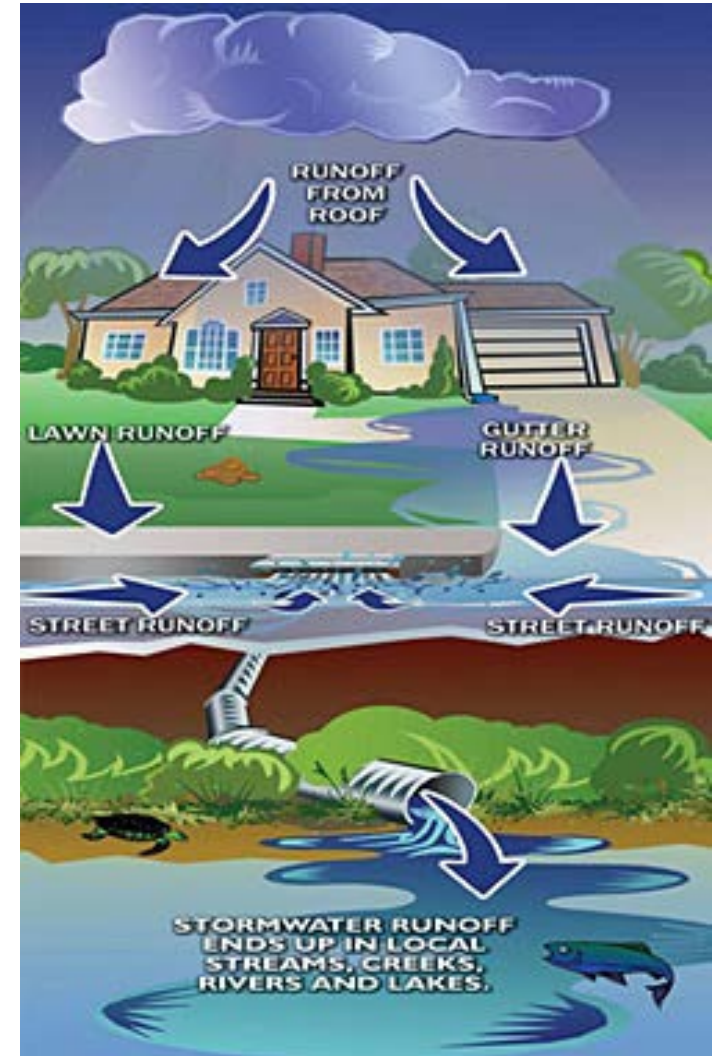
That water travels through a pipe and is released into the creek or the Waste Water Treatment Plant





So what does it have to do with me?

Even if you can't see creeks or the Appomattox River from your house, you can still impact it's health!





Walkable Watershed

A Walkable Watershed integrates the flow of **water** and **people** into a cohesive strategy to improve the overall health of a community and the surrounding watershed.



Purpose

Develop a Walkable Watershed concept plan that explores a range of opportunities to improve storm water and walkability in the Poor Creek and Harrison Creek watersheds.



Strategies

Integrating walkability and
stormwater improvements



On Street Opportunities

Swales are grassy or vegetated channels that safely hold and direct water from one place to another. They can be located adjacent to streets and parking lots to slow and clean the water before it flows to the creek.



Curb extension retrofit



Planted swale



Grassy swale



Safe crossings

Stormwater treatment can be integrated with safe pedestrian crossings.





Off Street Opportunities

Rain gardens are planted areas that are sunk into the ground to collect rainwater runoff from impervious urban areas (such as roofs, driveways and parking lots). Rain gardens can be added to front yards, public spaces and vacant lots.



Bioswales catch water and create habitat for birds and butterflies



In public spaces with educational signage



Rain gardens provide a visual attraction



Creating Connections

Celebrating and enhancing community connections to urban waterways and environment restoration provides multiple benefits.



Improved trails and access



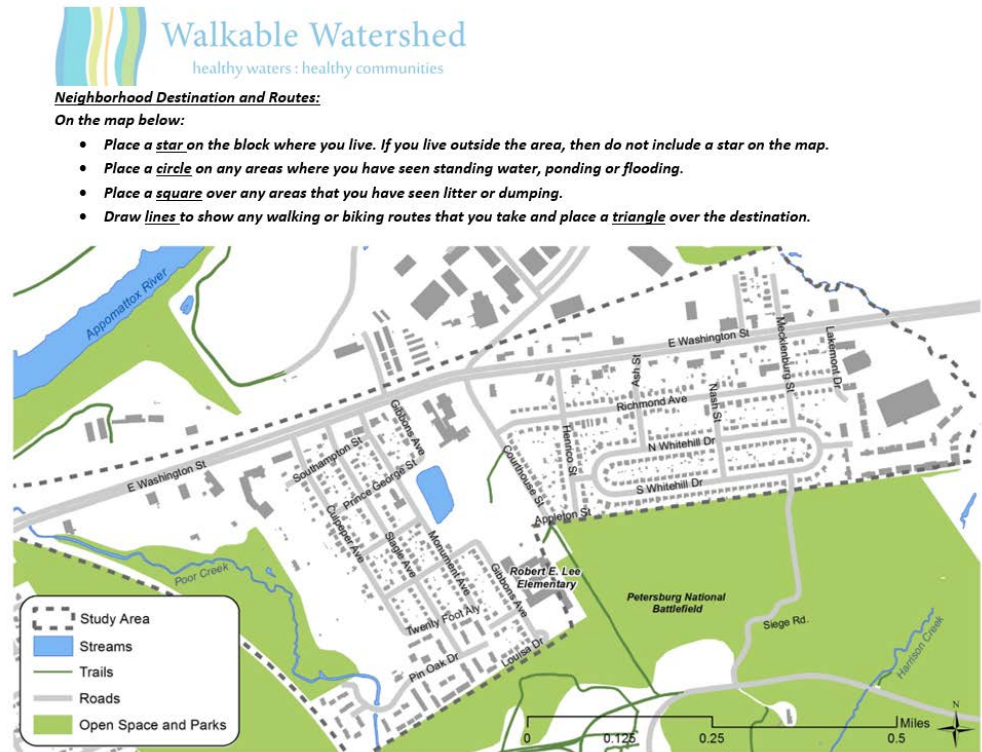
Educational signage

Process

Outline of next steps and anticipated outcomes

Survey

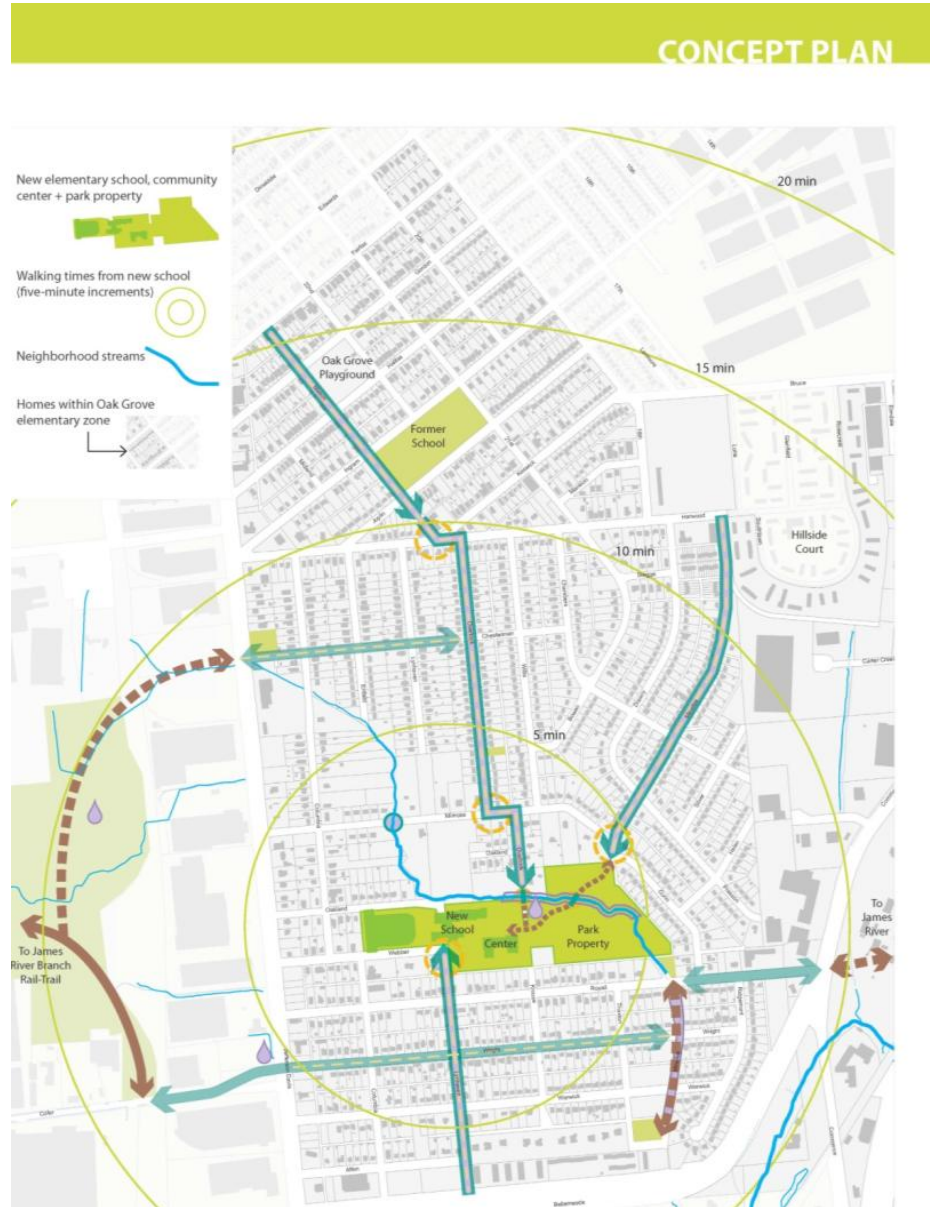
The Community Survey is focused on understanding community needs related to walking, biking, litter, local flooding and drainage issues.





Concept Plan

- Combine strategies into a larger vision of opportunities for the neighborhood.
- Provides a roadmap to guide investments and engage a range of partners and funding sources.





Near term outcomes

- Install rain barrels
- Trash clean up
- Educational Workshop
- Community event
- Partnership building for future grant applications





Upcoming Events & Next Steps

- Rain barrel installation (ongoing)
- Community Trash Clean-up event (TBD)
- Educational Workshop (TBD)
- Community meeting to hear update of survey results (February or March neighborhood meeting)
- Public meeting to share draft concept plan for neighborhood feedback (part of community event planned for April or May)



Add contact information

- JRA and City contact
- For project updates and additional information, please visit:
www.walkablewatershed.com/petersburg