



lower Little Rock Creek

# Walkable Watershed

healthy waters : healthy communities

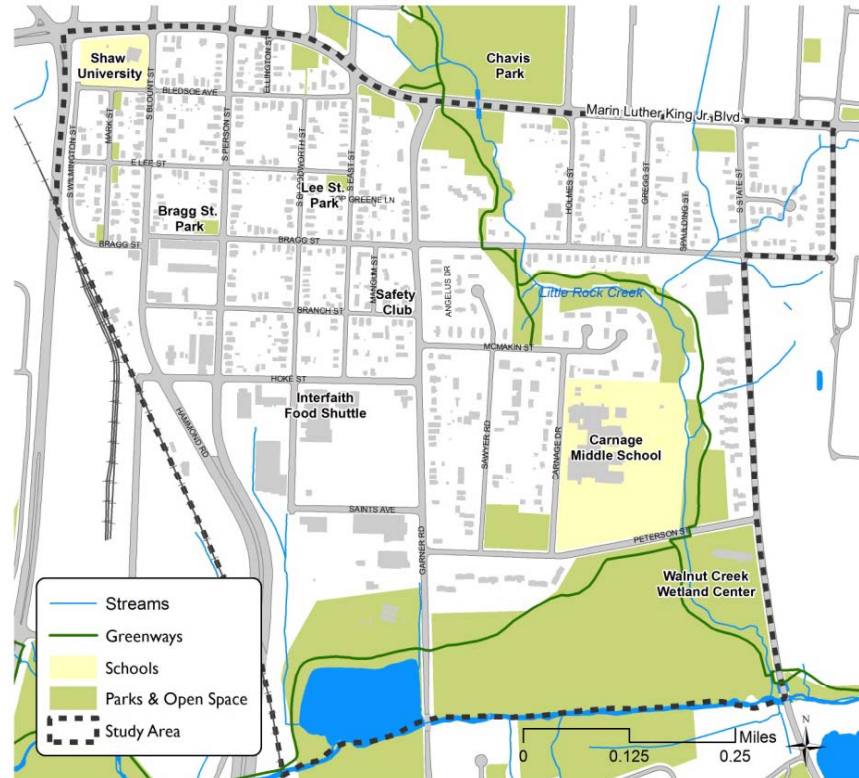


# Overview

- Purpose and Goals
- Watershed Context
  - Water Flows
  - Pedestrian Routes
  - Creek and Greenway
- Community Input



# Purpose



Develop a shared vision, set of strategies and concept plan to improve watershed and neighborhood health.



# The Concept

A Walkable Watershed integrates the flow of **water** and **people** into a cohesive strategy to improve the overall health of a community and the surrounding watershed.





# Process



- Begins with assets and challenges
- Based on community priorities
- Identifies on the ground projects
- Builds partnerships and coalitions
- Activates and supports stewardship



# Community Assets

- John Chavis Memorial Park
- Inter-Faith Food Shuttle and Urban Garden
- Raleigh Community and Safety Club
- Carnage Middle School
- Capital Area Greenway
- Walnut Creek Wetland Center
- Little Rock Creek and natural environment



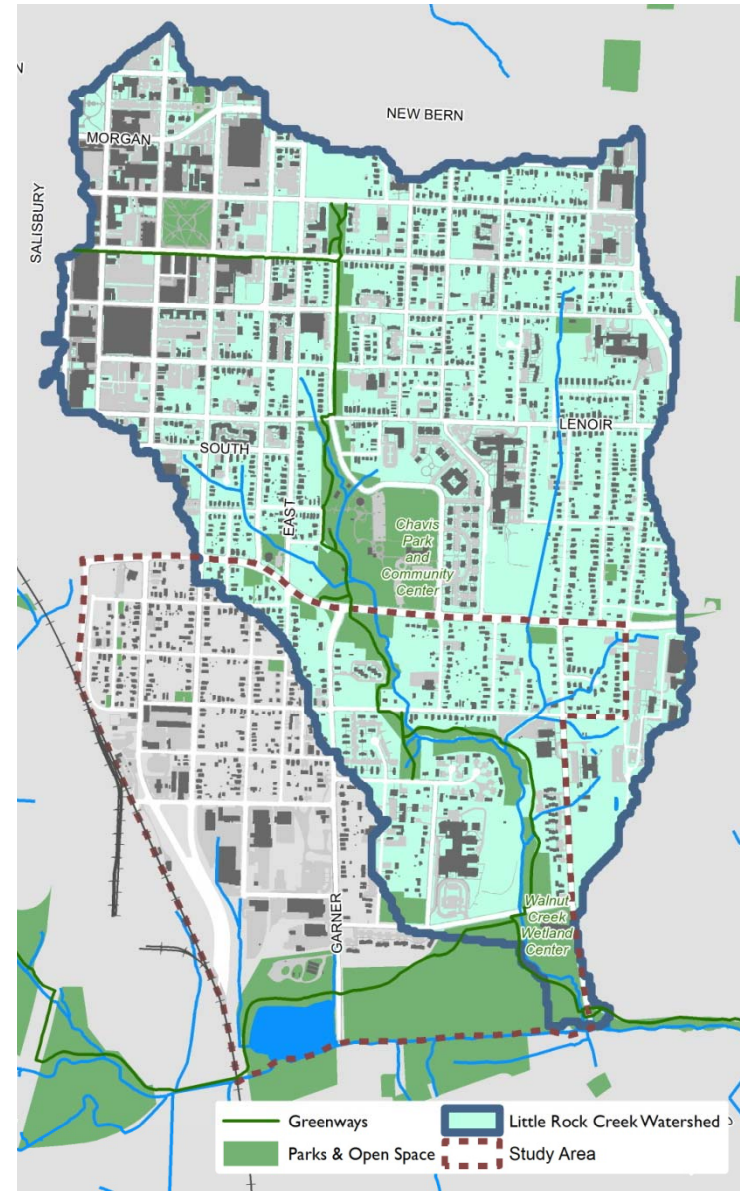
# Challenges

- Pedestrian safety crossing intersections
- Missing sidewalks on major pedestrian routes
- Flooding and mud on sidewalks/greenways
- Perception that walking in neighborhood and greenway is not safe
- People may be unaware there is a creek or see the creek as a nuisance



# Watershed

- A watershed is all the land area that drains to a waterbody (such as Little Rock Creek).
- The Little Rock Watershed includes downtown, Chavis Park, the greenway and surrounding neighborhoods.
- Stormwater in this area flows to the creek, and eventually the Neuse River.



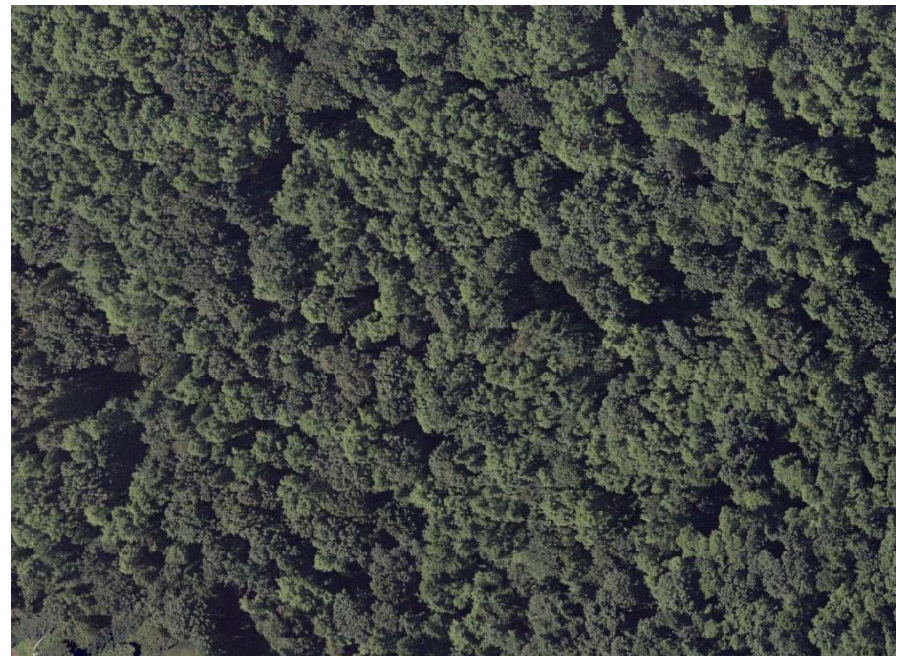


# Healthy watershed function

How do we make this...



function like this?







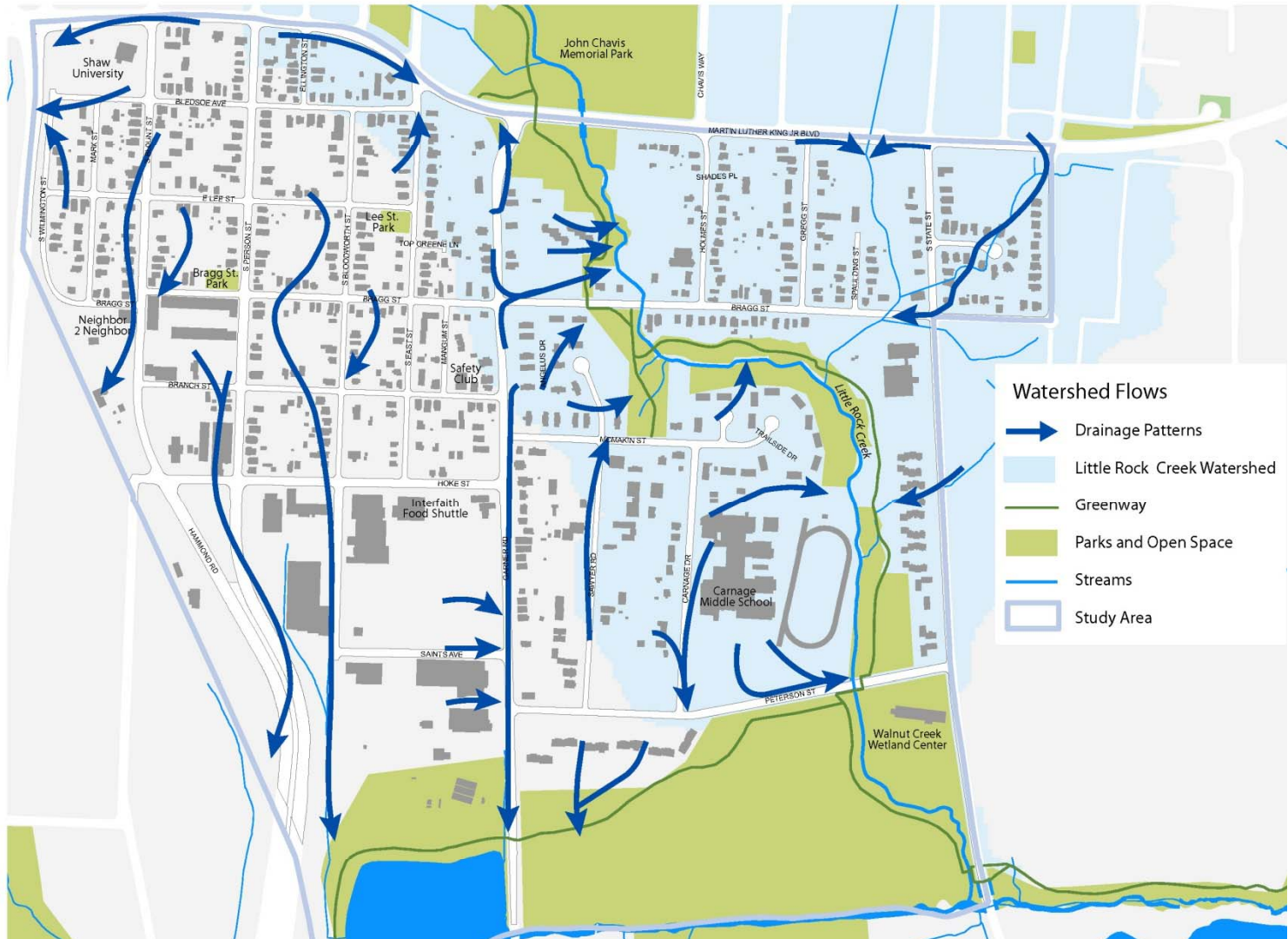
# Improving Water Flows

- Planted streetscapes can be used to slow and clean stormwater.
- Stormwater flow can be integrated into the streetscape in a way that provides multiple benefits – traffic calming, pedestrian safety and landscaping.



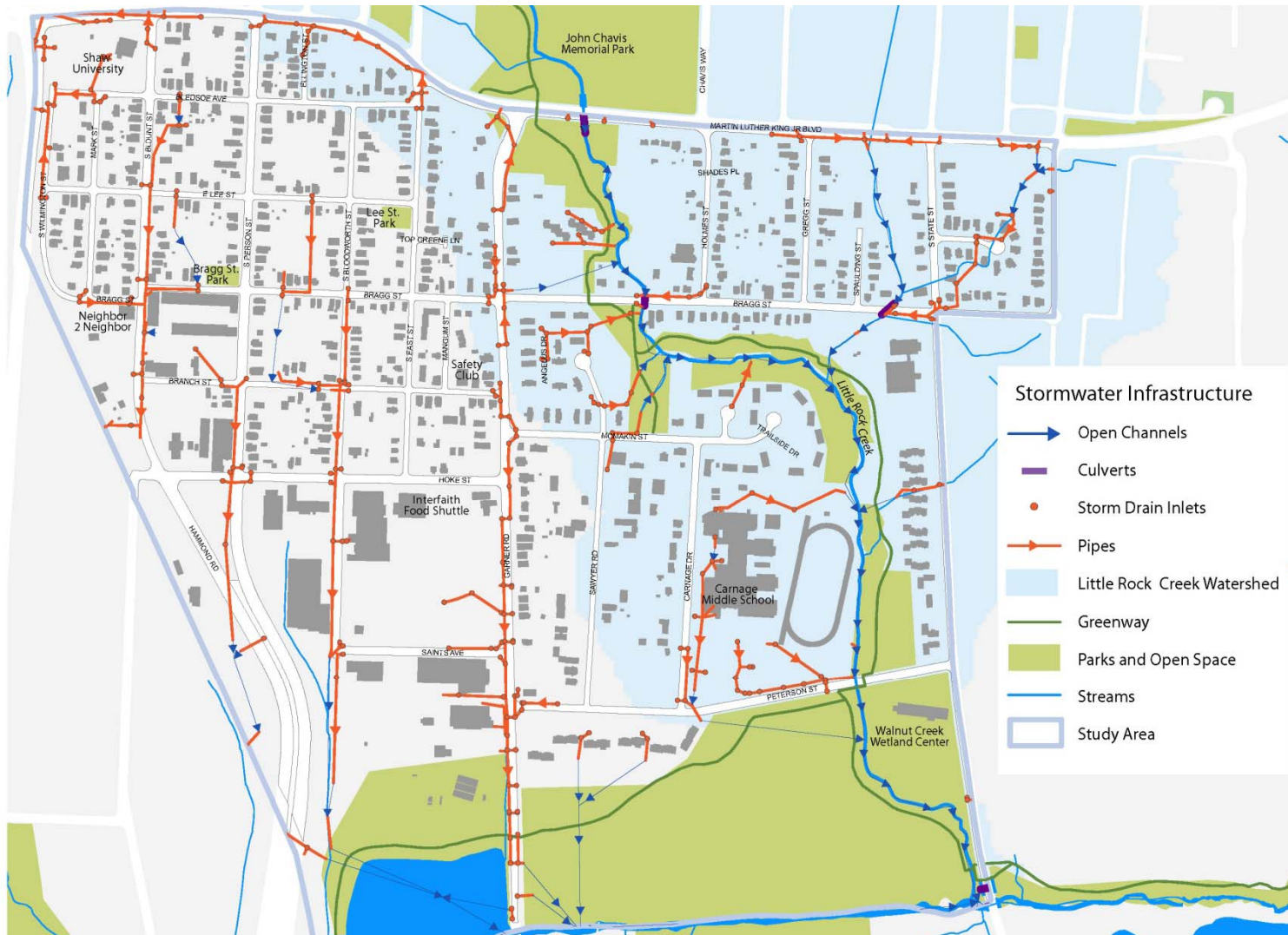


# Water Flows





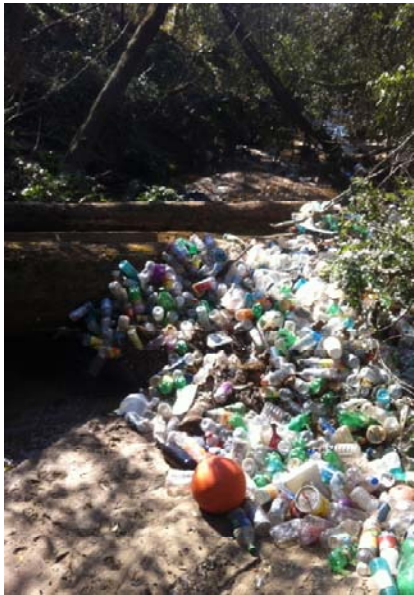
# Water Flows and Pipes







# Water flow challenges



- Litter and illegal dumping
- Erosive flows
- Polluted water
- Local flooding



# Water Flow and Flooding

*Where are flooding issues or opportunities to address water flow, such as ponding or standing water?*

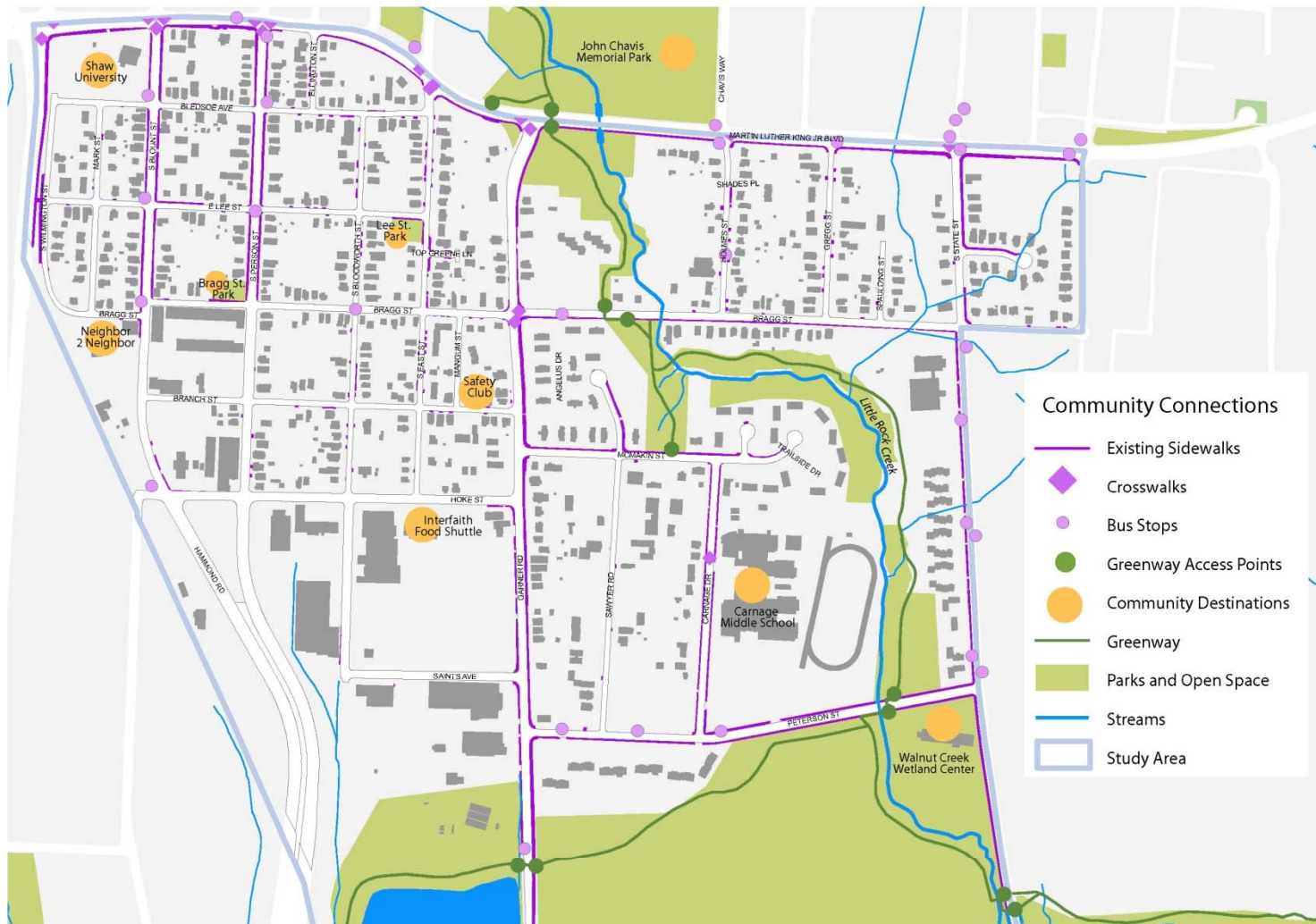
# Community Destinations







# Community Connections







# Walking and Biking

- *Where are the major community destinations?*
- *Where do pedestrian routes need to be improved?*
- *How can safety be improved?*
- *What would make walking or biking more enjoyable?*



# Creek and Greenway

- Which access points and areas of the greenway do you use?
- What activities would you like to see in the greenway?
- Are there areas of the greenway where views or access could be improved?
- Are there places where a creek crossing would be desirable?







# Community Input

- Who should be involved?
- How best to gather community input?



# Next Steps

Community ideas will be integrated into a draft plan to share with the public. Stay tuned for the next public meeting to continue providing input on this project.





# Open House Stations

Please visit the following stations and share your ideas:

- *Walking and Biking*
- *Water Flows and Flooding*
- *Creek and Greenway*
- *Community Input*
- *Youth Station*





# Questions?